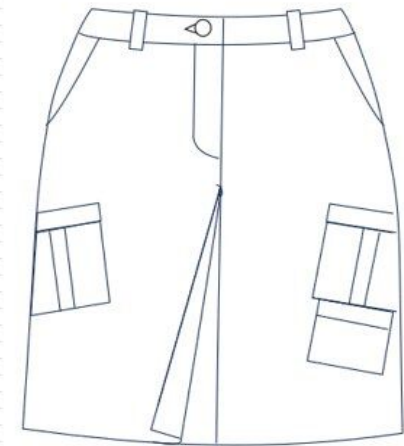
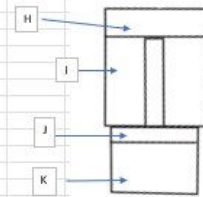
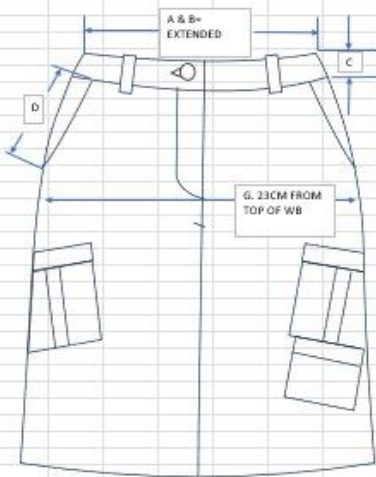


SHORT SKIRT SU623i

	MEASUREMENTS (CM)	ToL	XXS	XS	S	M	L	XL	2XL
A	WAIST WIDTH	1	32	36	40	44	48	52	56
B	WAIST EXTENDED	1	34	38	42	46	50	54	58
C	WAISTBAND HEIGHT	0.5	4.7	4.7	4.7	4.7	4.7	4.7	4.7
D	SLASH POCKET OPENING	0.5	14.6	14.6	14.6	14.6	14.6	14.6	14.6
E	CENTER BACK LENGTH FROM TOP OF WAISTBAND	1	62	62	62	62	62	62	62
F	BOTTOM SWEEP (pleat closed - along edge) HALF	1	47.5	51.5	55.5	59.5	63.5	67.5	71.5
G	HIPS - 23CM FROM TOP OF WAISTBAND	1	45.5	49.5	53.5	57.5	61.5	65.5	69.5
H	THIGH CARGO POCKET FLAP (width x height)	0.5	15*5	15*5	15*5	15*5	15.5*5	15.5*5	15.5*5
I	THIGH CARGO POCKET (width x height)	0.5	14*14.5	14*14.5	14*14.5	14*14.5*	14.5*15	14.5*15	14.5*15
J	LEFT THIGH LOWER POUCH POCKET FLAP (width x height)	0.5	11*3.5	11*3.5	11*3.5	11*3.5	11.3.5	11*3.5	11*3.5
K	LEFT THIGH LOWER POUCH POCKET (width x height)	0.5	10.5*12.5	10.5*12.5	10.5*12.5	10.5*12.5	10.5*12.5	10.5*12.5	10.5*12.5
L	BACK POCKET FLAP (width x height)	0.5	13*5	13*5	13*5	13*5	13*5	13*5	13*5
	BACK POCKET BESOM (width x height)	0.5	12*1	12*1	12*1	12*1	12*1	12*1	12*1
	FLY LENGTH	0.5	15	15	15	16	16	16	16
	FLY WIDTH	0.5	4	4	4	4	4	4	4
	ZIPPER LENGTH	0.5	14	14	14	15	15	15	15
	LOOP SIZE	0.5	7*2.5	7*2.5	7*2.5	7*2.5	7*2.5	7*2.5	7*2.5
	NUMBER OF LOOPS		5	5	5	7	7	7	7
	PHONE POCKET FRONT WELT POCKET OPENING	0.5	10.5	10.5	10.5	10.5	10.5	10.5	10.5
	PHONE POCKET WELT HEIGHT	0.5	1	1	1	1	1	1	1
	PHONE POCKET DEPTH	0.5	15	15	15	15	15	15	15
	PHONE POCKET - PLACEMENT BELOW BOTTOM OF FRONT SIDE SEAM POCKET	0.5	0.6	0.6	0.6	0.6	0.6	0.6	0.6



LONG SKIRT SU624i

	MEASUREMENTS (CM)	ToL.	XXS	XS	S	M	L	XL	2XL
A	WAIST WIDTH	1	32	36	40	44	48	52	56
B	WAIST EXTENDED	1	34	38	42	46	50	54	58
C	WAISTBAND HEIGHT	0.5	4.7	4.7	4.7	4.7	4.7	4.7	4.7
D	SLASH POCKET OPENING	0.5	14.6	14.6	14.6	14.6	14.6	14.6	14.6
E	CENTER BACK LENGTH FROM TOP OF WAISTBAND	1	84	84	84	84	84	84	84
F	BOTTOM SWEEP (pleat closed - along edge) HALF	1	41.5	45.5	49.5	53.5	57.5	61.5	65.5
G	HIPS 23CM FROM TOP OF WAISTBAND	1	45.5	49.5	53.5	57.5	61.5	65.5	69.5
H	THIGH CARGO POCKET FLAP (width x height)	0.5	20.5*6.4	20.5*6.4	20.5*6.4	20.5*6.4	21*6.4	21*6.4	21*6.4
I	THIGH CARGO POCKET (width x height)	0.5	18.5*19	15.8*19	18.5*19	18.5*19	19*19.5	19*19.5	19*19.5
J	LEFT THIGH LOWER POUCH POCKET FLAP (width x height)	0.5	14.5*3.5	14.5*3.5	14.5*3.5	14.5*3.5	14.5*3.5	14.5*3.5	14.5*3.5
K	LEFT THIGH LOWER POUCH POCKET (width x height)	0.5	14*16.5	14*16.5	14*16.5	14*16.5	14.5*16.5	14.5*16.5	14.5*16.5
L	BACK POCKET FLAP (width x height)	0.5	13*5	13*5	13*5	13*5	13*5	13*5	13*5
	BACK POCKET BESOM (width x height)	0.5	12*1	12*1	12*1	12*1	12*1	12*1	12*1
	FLY LENGTH	0.5	15	15	15	16	16	16	16
	FLY WIDTH	0.5	4	4	4	4	4	4	4
	ZIPPER LENGTH	0.5	14	14	14	15	15	15	15
	LOOP SIZE	0.5	7*2.5	7*2.5	7*2.5	7*2.5	7*2.5	7*2.5	7*2.5
	NUMBER OF LOOPS		5	5	5	7	7	7	7
	PHONE POCKET FRONT WELT POCKET OPENING	0.5	10.5	10.5	10.5	10.5	10.5	10.5	10.5
	PHONE POCKET WELT HEIGHT	0.5	1	1	1	1	1	1	1
	PHONE POCKET DEPTH	0.5	15	15	15	15	15	15	15
	PHONE POCKET - PLACEMENT BELOW BOTTOM OF FRONT SIDE SEAM POCKET	0.5	0.6	0.6	0.6	0.6	0.6	0.6	0.6

